

# LGP-A(B-2B) Petrol engine pump



LGP20-2B  
LGP30-2B



LGP20-B  
LGP30-B



## Application

- Transfer of clean water at a temperature between 0 and 40 ° C
- Usable for water supply and drainage for factories, mines, public facilities as well as for irrigation

## Pompe

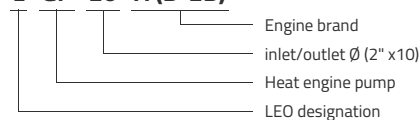
- Reinforced pump body for greater durability and reliability
- Better sealing thanks to a specific mechanical seal
- Outlet with 5 possible directions for easier use
- Improved starter grip for easier starting
- Impeller and diffuser in cathaphoresis-treated cast iron
- Maximum suction at 5 m, priming time at 5 m of 2 min
- 38 mm suction and blowing

## Moteur

- LEO engine as standard, Honda or Briggs and Stratton engine as option
- Single cylinder, 4-stroke, air-cooled
- Maximum power 5,5 or 6,5 Hp
- Engine cylinder capacity: 163 cm<sup>3</sup> or 196 cm<sup>3</sup>
- Rotation speed: 3600 rpm

## Identification codes

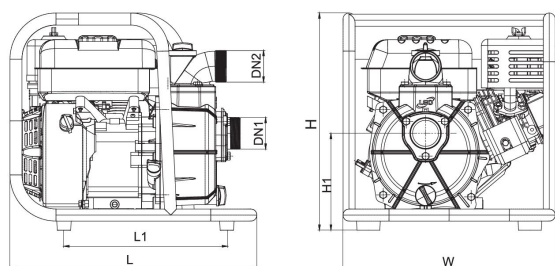
**L GP 20 A (B-2B)**



## Technical data

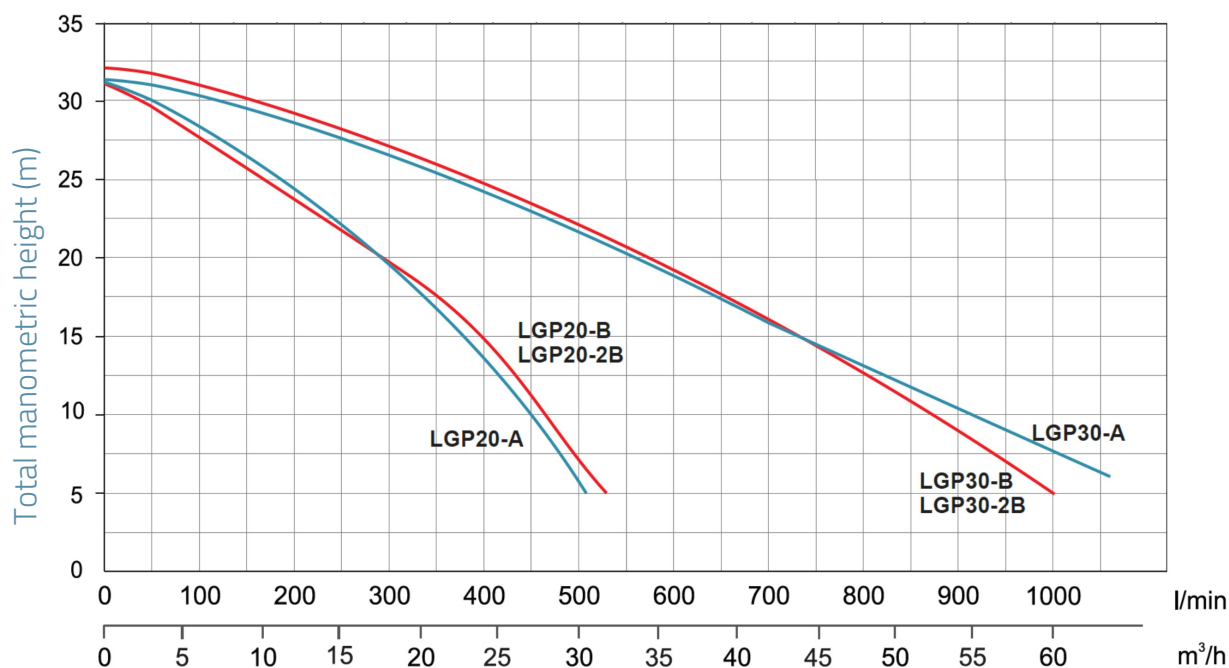
MODEL	kW	Q (m <sup>3</sup> /h)													
		0	5	10	15	20	25	30	35	40	45	50	55	60	
		Q (l/min)													
		0	83	167	250	333	417	500	583	667	750	833	917	1000	
LGP10-A	2.2														
LGP15 A	2.25	26	23.9	20	16.5										
LGP20-A	4.1	32	29.1	25.2	21.5	16.6	11.3	6.5							
LGP20-A-1	3.7														
LGP30-A-1	4.9														
LGP20-B	3.75	32	28	24.5	21	17.5	14	7.5							
LGP20-2B	3.75	32	28.5	25	22	18	14	7.5							
LGP30-A	4.85	32	30.4	29.3	27.1	25.5	23	20.5	18	16.2	13.5	11	9	6	
LGP30-B	3.75	31	30	28	26.5	25	23	20	17.5	15	13.5	10	6.5	4	
LGP30-2B	3.75	33	32	30	28.4	27	25	22	19.3	17	15.5	12	8.6	5	

## Dimensions



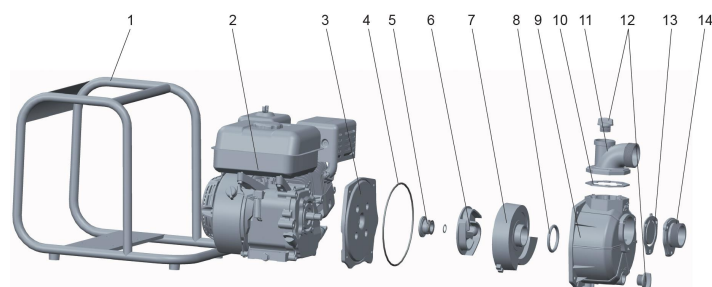
MODEL	DN1	DN2	L	W	H	H1
LGP10-A						
LGP15 A	1½	1½	438	358	377	164.2
LGP20-A	2	2	455	397.5	405.5	181
LGP20-A-1						
LGP30-A-1						
LGP20-B	2	2	530	420	425	181
LGP20-2B	2	2	530	420	425	183
LGP30-A	3	3	455	397.5	405.5	181
LGP30-B	3	3	530	420	425	190.5
LGP30-2B	3	3	530	420	425	190

## Hydraulic performance



## Exploded view

No.	Type	Materials
1	Frame	steel
2	Engine	
3	Pump bottom	aluminum alloy ADC12
4	O-ring	nitrile rubber (NBR)
5	Mechanical seal	carbon / ceramic
6	Impeller	cast iron HT200
7	Diffuser	cast iron HT200
8	O-ring	nitrile rubber (NBR)
9	Pump body	aluminium
10	Seal	nitrile rubber (NBR)
11	Outlet fitting	aluminium
12	Plug	PA6 resin
13	Non-return valve	nitrile rubber (NBR)
14	Inlet fitting	aluminium



## Packaging

MODEL	Weight (kg)	Length L (mm)	Width W (mm)	Height H (mm)
LGP10-A	0	0	0	0
LGP15 A	15.5	464	378	400
LGP20-A	22.5	470	412	432
LGP20-A-1	0	0	0	0
LGP30-A-1	0	0	0	0
LGP20-B	24	545	435	435
LGP20-2B	25.2	545	435	435
LGP30-A	24	470	412	432
LGP30-B	25	545	435	435
LGP30-2B	27.2	545	435	435

