

# APm Peripheral Pump



## Application

- Can be used to transfer clean water or other liquids similar to water in physical and chemical properties
- Suitable for small living water supply, automatic water sprinkler system, small air conditioner system or supporting equipment etc.

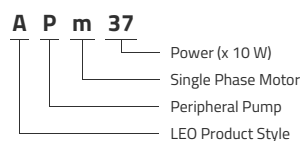
## Pompe

- Special anti-rust treatment for cast iron pump body and support
- Anti-block system for impeller
- Brass impeller
- AISI 304 Shaft
- Max. liquid temperature: +60°C
- Max. suction: +8 m

## Moteur

- C&U bearing
- Motor with copper winding
- Built-in thermal protector for single phase motor
- Insulation class: F
- Protection class: IPX4
- Max. ambient temperature: +40°C
- IE 2 motor (AP110, AP150)

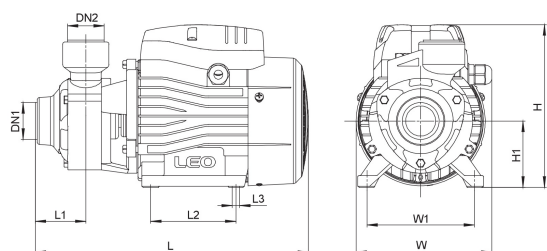
## Identification codes



## Technical data

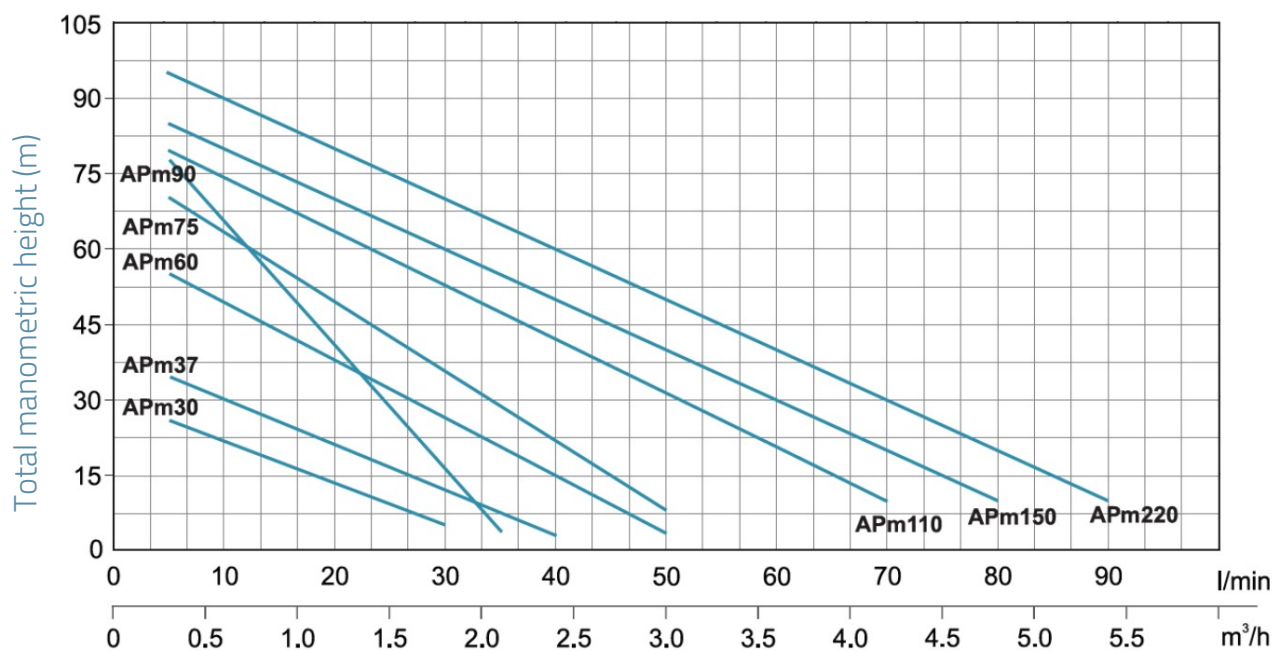
MODEL	kW	Q (m³/h)										
		0	0.3	0.6	0.9	1.2	1.5	1.8	2.1	2.4	3	
		Q (l/min)	0	5	10	15	20	25	30	35	40	50
APm30	0.3	30	26	20	15	12	8	5	0	0	0	0
APm37	0.37	40	35	30	25	20	15	10	5	0	0	0
APm60	0.6	60	55	50	40	35	30	25	20	10	5	5
APm75	0.75	75	70	60	50	45	35	28	22	15	5	5
APm90	0.75	90	75	60	50	35	25	15	5	0	0	0
APm110	1.1	85	80	75	65	60	55	50	45	40	30	30
AP110	1.1	85	80	75	65	60	55	50	45	40	30	30
APm150	1.5	90	86	80	75	70	65	60	55	50	40	40
AP150	1.5	90	86	80	75	70	65	60	55	50	40	40
APm220	2.2	100	96	90	85	80	75	70	65	60	50	50
AP220	2.2	100	96	90	85	80	75	70	65	60	50	50

## Dimensions



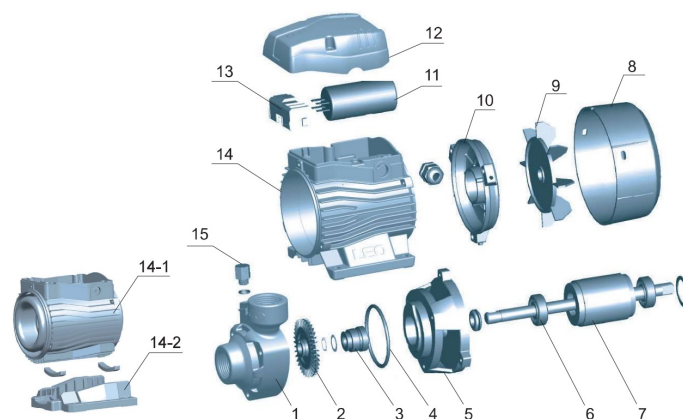
MODEL	DN1	DN2	L	W	H	L1	L2	L3	W1	H1
APm30	1	1	260	132	155	46.5	80	8.5	100	63
APm37	1	1	260	132	155	46.5	80	8.5	100	63
APm60	1	1	282	147	183	51	90	8.5	112	71
APm75	1	1	300	147	183	54.5	90	8.5	112	71
APm90	¾	¾	297	147	183	50	90	8.5	112	71
APm110	1	1	336	165	210	56	100	9	125	86
AP110	1	1	336	165	210	56	100	9	125	86
APm150	1	1	338	165	210	56	100	9	125	86
AP150	1	1	338	165	210	56	100	9	125	86
APm220	1	1	395	170	235	56	123	12	140	96
AP220	1	1	338	165	210	56	100	9	125	86

## Hydraulic performance



## Exploded view

No.	Type	Materials
1	Pump body	cast iron HT200
2	Impeller	brass
3	Mechanical seal	carbon / ceramic
4	O-ring	nitrile rubber (NBR)
5	Lantern	cast iron HT200
6	Bearing	
7	Rotor	
8	Fan cover	polypropylene
9	Fan	polypropylene
10	Rear cover	cast aluminum ZL102
11	Capacitor	
12	Electric box cover	ABS
13	Terminal board	
14	Stator	
14.1	Stator (alone)	
14.2	Base	
15	Filling plug	brass HPb59-1



## Packaging

MODEL	Weight (kg)	Length L (mm)	Width W (mm)	Height H (mm)
APm30	5.1	283	158	171
APm37	5.5	283	158	171
APm60	9	315	190	210
APm75	10.5	335	190	210
APm90	10.5	335	190	210
APm110	15.9	370	210	235
AP110	15.9	370	210	235
APm150	16.5	370	210	235
AP150	16.5	370	210	235
APm220	22.3	420	225	265
AP220	17.2	370	210	235

